

LUXPERTEN



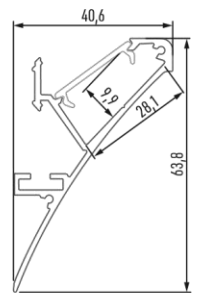
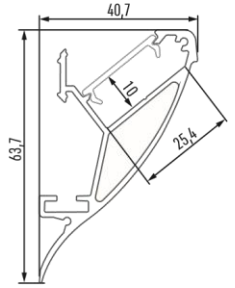
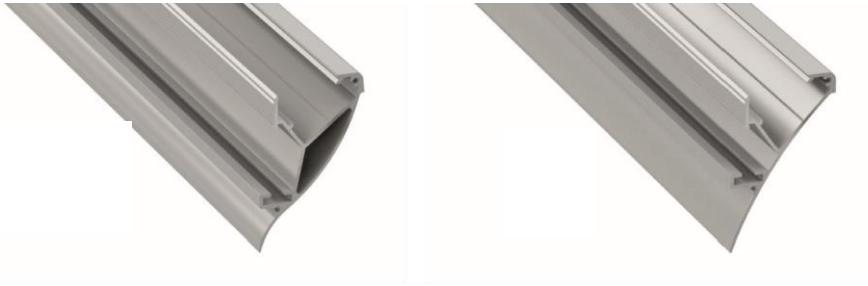
Profil LED

Profile LED / LED-Profil

LPLO



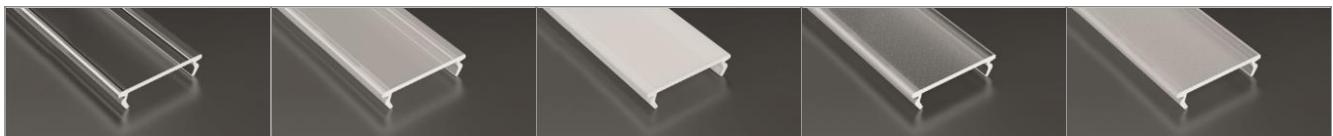
LUXPERTEN



	white (lacquered) / weiß (lackiert)	silver (anodized) / silber (eloxiert)
CONVA		
LOGI		
Dimensions / Abmessungen	1000 mm, 2020 mm, 3000 mm	
LED strip width / LED-Streifen Breite	2 x 12 mm	
Application / Anwendungsbereich	surface profiles – for the decorative and wall lighting or for the cove LED lighting / Oberflächenprofile – zur dekorativen Anwendung, für Wände oder Decken, zum direkten Verbau	

transparent / transparent	frozen / frostweiß	milky / milchweiß	frosted / frosted	milky frosted / frosted milchweiß
---------------------------	--------------------	-------------------	-------------------	-----------------------------------

DOUBLE



✦ PMMA 93%

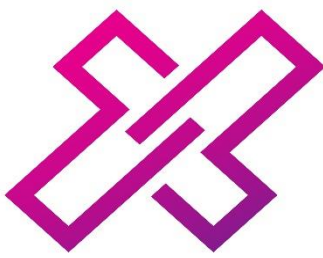
✦ PMMA 51%

85%

✦ PMMA 82%

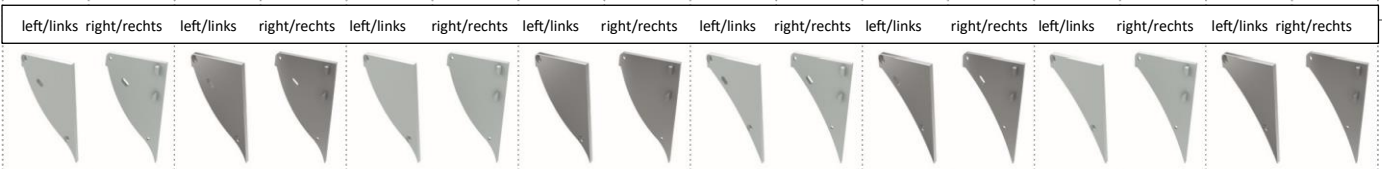
Covers / Abdeckungen

Dimensions / Abmessungen: 1000 mm, 2020 mm, 3000 mm



LUXPERTEN

with a hole / mit Öffnung		without a hole / ohne Öffnung		with a hole / mit Öffnung		without a hole / ohne Öffnung	
white / weiß	silver / silber	white / weiß	silver / silber	white / weiß	silver / silber	white / weiß	silver / silber
CONVA				LOGI			



Dodathi Accessories / Zubehör

straight connector / gerader Verbinder	angular transverse connector / Quer Winkelverbinder 90°	angular connector 90° / Flacher Winkelverbinder 90°	angular connector 120° / Flacher Winkelverbinder 120°	mounting profile SPARO / Montageprofil SPARO

Maximum dissipated power of LED light sources / Maximale zerstreute
Stärke von LED-Lichtquellen

for temperature profile / für
Profiltemperatur 55 °C

for temperature profile / für
Profiltemperatur 65 °C

LPLO

49 W

63 W